

CERTIFICATE OF ANALYSIS

PRODUCT NAME: CBD 2 oz Salve
PRODUCT STRENGTH: 1000 mg
LOT NUMBER: 0114A
BEST BY DATE: 10/24/21
HEMP EXTRACT LOT NUMBER: [112619](#)

Click on the links to view third-party reports

Physical Attributes

Test	Method	Specification	Results
Color	SOP-100	Light off white to yellow opaque, hint of green	PASS
Odor	SOP-100	Lavender, eucalyptus, hint of beeswax and coconut	PASS
Appearance	SOP-100	Firm, semi-waxy salve in container with screw lid	PASS
Primary Package Eval.	SOP-132	Container clean and free of filth. Container caps tight and pressu seal intact	PASS
Secondary Package Eval.	SOP-132	Labeling Compliance Checked, Cartons sturdy and clean. Sufficie cushion material exists. Box taped and secure.	PASS

Review of Third-Party Analysis

Panel	Method	Specification	Results	Pass/Fail
Potency - Total CBD	SOP-111	950-1250 mg CBD LOQ**: 10 PPM† (0.001%)	1060 mg	PASS
Potency - D9-THC	SOP-111	None Detected LOQ: 10 PPM (0.001%)	ND	PASS
Compliant Pesticide Panel	SOP-111	WIP-100008 : Product specification for Topicals Oregon Action limits apply	ND	PASS
Microbial - Stec E.Coli	SOP-111	Complies with USP 61/62	Below LOD	PASS
Microbial - Salmonella	SOP-111	Complies with USP 61/62	Below LOD	PASS
Microbial - Yeast and Mold	SOP-111	Complies with USP 61/62	Below LOD	PASS
CA Compliant Heavy Metal Panel	SOP-111	Arsenic (As): ≤1.5 PPM Cadmium (Cd): ≤0.5 PPM Mercury (Hg): ≤1.0 PPM Lead (Pb): ≤0.5 PPM	Below LOQ	PASS

* Level of Quantitation, † Parts Per Million

Quality Certified by: *Darcie Moran* 04.30.2020

 Darcie Moran Date
 Manager of Quality Assurance

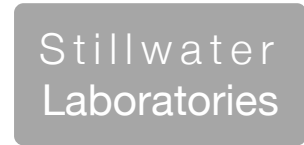


total cannabinoids
1060 mg
 per
2oz Jar

Δ^9 -THC 0 mg
 CBD 1042 mg

THCa 0 mg
 CBDa 8 mg

total THC 0 mg
 total CBD 1048 mg



https://portal.a2la.org/scopepdf/4961-01.pdf

Sample Handling

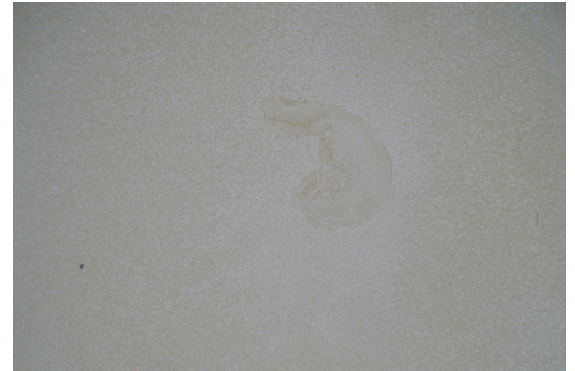
test ID sample wt 56.8 g
 type topical order 7141
 lab ID ODX49 sample date 4/27/2020
 unit 2oz Jar unit weight 56.8 g

Methods

method	equipment
weights MSP-7.3.1.3	AUX120.1
potency MSP-7.5.1.5	LC-2030
terpenes MSP-7.5.1.7	QP2020/HS20
pesticides MSP-7.5.1.8	LC-8060
mycotoxins MSP-7.5.1.8	LC-8060
microbial MSP-7.5.1.9	Hardy Diag
solvents MSP-7.5.1.6	QP2020/HS20
metals MSP-7.5.1.1	ICPMS2030



topical



Potency	per	2oz Jar	estimated error	Terpenes	%	estimated error	%	estimated error	%	estimated error		
tetrahydrocannabinolic acid (THCa)	0%	0 mg	± 0.93 mg	β -myrcene	0.000%	± 0.0016%	camphene	0.000%	± 0.0016%	guaiaol	0.000%	± 0.0016%
Δ^9 -tetrahydrocannabinol (Δ^9 THC)	0%	0 mg	± 0.93 mg	β -caryophyllene	0.000%	± 0.0016%	Δ^3 -carene	0.000%	± 0.0016%	β -bisabolol	0.000%	± 0.0016%
Δ^8 -tetrahydrocannabinol (Δ^8 THC)	0%	0 mg	± 0.93 mg	alpha-pinene	0.000%	± 0.0016%	a-terpinene	0.000%	± 0.0016%	eucalyptol	0.000%	± 0.0016%
tetrahydrocannabivarin (THCv)	0%	0 mg	± 0.93 mg	β -pinene	0.000%	± 0.0016%	para-cymene	0.000%	± 0.0016%			
cannabidiolic acid (CBDA)	.01%	8 mg	± 1.11 mg	D-limonene	0.000%	± 0.0016%	g-terpinene	0.000%	± 0.0016%			
cannabidiol (CBD)	1.83%	1042 mg	± 7.22 mg	linalool	0.000%	± 0.0016%	(-)-isopulegol	0.000%	± 0.0016%			total
cannabidivarin (CBDv)	.02%	10 mg	± 1.17 mg	ocimene	0.000%	± 0.0033%	geraniol	0.000%	± 0.0016%			terpenes
cannabigerolic acid (CBGa)	0%	0 mg	± 0.93 mg	terpinolene	0.000%	± 0.0016%	cis-nerolidol	0.000%	± 0.0016%			0.00%
cannabigerol (CBG)	0%	0 mg	± 0.93 mg	alpha-humulene	0.000%	± 0.0016%	trans-nerolidol	0.000%	± 0.0016%			
cannabinol (CBN)	0%	1 mg	± 0.96 mg									
cannabichromene (CBC)	0%	0 mg	± 0.93 mg									

Solvents	MT limit	ODX49	LOQ	Pesticides (MT)	MT limit	ODX49	LOQ	Pesticides (other)	ODX49	LOQ
propane	5,000	0 ppm	<10ppm	abamectin		0.00 ppm	<10ppb	acephate	0.00 ppm	<10ppb
butanes	5,000	0 ppm	<10ppm	acequinocyl		0.00 ppm	<10ppb	acetamiprid	0.00 ppm	<10ppb
pentanes	5,000	0 ppm	<10ppm	bifenazate		0.00 ppm	<10ppb	aldicarb	0.00 ppm	<10ppb
hexanes	290	0 ppm	<10ppm	bifenthrin		0.00 ppm	<10ppb	azoxystrobin	0.00 ppm	<10ppb
cyclohexane	3,880	0 ppm	<10ppm	chlormequat cl.		0.00 ppm	<10ppb	boscalid	0.00 ppm	<10ppb
heptanes	5,000	0 ppm	<10ppm	cyfluthrin		0.00 ppm	<80ppb	carbaryl	0.00 ppm	<10ppb
methanol	3,000	0 ppm	<10ppm	diaminozide		0.00 ppm	<10ppb	carbofuran	0.00 ppm	<10ppb
isopropanol	5,000	0 ppm	<10ppm	etoxazole		0.00 ppm	<10ppb	chloantraniliprole	0.00 ppm	<10ppb
acetone	5,000	0 ppm	<10ppm	fenoxycarb		0.00 ppm	<10ppb	chlorpyrifos	0.00 ppm	<10ppb
ethyl acetate	5,000	0 ppm	<10ppm	imazalil		0.00 ppm	<10ppb	clofentazine	0.00 ppm	<10ppb
benzene	2	0 ppm	<0.2ppm	imidacloprid		0.00 ppm	<10ppb	cypermethrin	0.00 ppm	<10ppb
toluene	890	0 ppm	<10ppm	myclobutanil		0.00 ppm	<10ppb	diazinon	0.00 ppm	<10ppb
xylenes	2,170	0 ppm	<10ppm	paclobutrazol		0.00 ppm	<10ppb	dichlorvos	0.00 ppm	<10ppb
chloroform	2	0 ppm	<0.2ppm	pyrethrins		0.00 ppm	<10ppb	dimethoate	0.00 ppm	<10ppb
dichloromethane	600	0 ppm	<10ppm	spinosad		0.00 ppm	<10ppb	etofenprox	0.00 ppm	<10ppb
				spiromesifen		0.00 ppm	<10ppb	fenpyroximate	0.00 ppm	<10ppb
				spirotetramat		0.00 ppm	<10ppb	fipronil	0.00 ppm	<10ppb
				trifloxystrobin		0.00 ppm	<10ppb	flonicamid	0.00 ppm	<10ppb
								fludioxonil	0.00 ppm	<10ppb
								hexythiazox	0.00 ppm	<10ppb
								kresoxym-methyl	0.00 ppm	<10ppb
								malathion	0.00 ppm	<10ppb
								metalaxyl	0.00 ppm	<10ppb
								methiocarb	0.00 ppm	<10ppb
								methomyl	0.00 ppm	<10ppb
								oxamyl	0.00 ppm	<10ppb
								permethrins	0.00 ppm	<10ppb
								phosmet	0.00 ppm	<10ppb
								piperonyl butoxide	0.00 ppm	<10ppb
								prallethrin	0.00 ppm	<10ppb
								propiconazole	0.00 ppm	<10ppb
								pyridaben	0.00 ppm	<10ppb
								spiroxamine	0.00 ppm	<10ppb
								tebuconazole	0.00 ppm	<10ppb
								thiacloprid	0.00 ppm	<10ppb
								thiamethoxam	0.00 ppm	<10ppb

Toxic Metals

MT limit	ODX49	LOQ
arsenic 2 ppm	0.0 ppm	<10ppb
cadmium 4.1 ppm	0.0 ppm	<10ppb
lead 1.2 ppm	0.0 ppm	<10ppb
mercury 0.4 ppm	0.0 ppm	<10ppb

Comments

-No terpenes detected

Microbial	MT limit	ODX49	LOQ
<i>E. coli</i>	10 CFU	0 CFU	<10 CFU/g
Salmonella sp.	10 CFU	0 CFU	<10 CFU/g
molds	10000 CFU	0 CFU	<10k CFU/g
Aflatoxin B1,B2,G1,G2	20 ppb	0 ppb	<20 ppb
Ochratoxin A	20 ppb	0 ppb	<20 ppb

All testing was completed onsite at 6073 US93N, Olney MT. Potency (cannabinoid concentration) is calculated from the equation: [cannabinoid] = [cannabinoid]_{HPLC} x volume_{dilution}/m_{dry}. Terpene concentration is calculated from the equation: [terpene] = (terpene mass)_{GCMS} / m_{dry}. Decarboxyted cannabinoid concentration is calculated from the equation XXX_{total} = 0.877 x XXX_a + XXX. Standards are used to calibrate the resulting data and estimate error using a standard estimate of error method; this is combined with error from weighing and dilution using the propagation of error formula s_g² = $\sum (\partial f/\partial i)^2 s_i^2$ where i is the contributor to error. The 95% confidence range is calculated from the equation: (concentration) \pm t_{CL90} x s_g. Sampling error is not

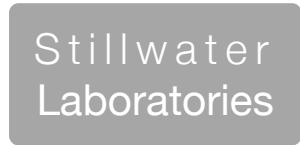
Certified by:

 Ron Brost, PhD PEng (Chem)
 Director
 6073 US93N, Olney MT 59927
 406-881-2019 rdb@stwlabs.com



total cannabinoids 84.7%
 CBD decarb total 80.7%
 Δ9-THC ND

This Product Has Been Tested and Complies with 7USC1639o(1) Definition of Hemp

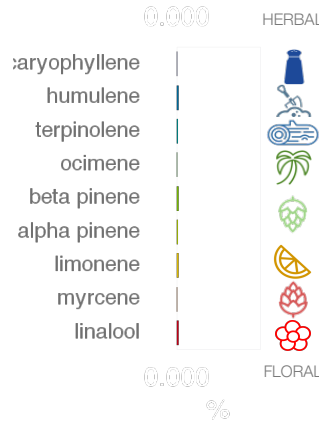


https://portal.a2la.org/scopepdf/4961-01.pdf

Sample Handling

test ID sample date 2/24/20 4:49 PM
 order 6654 labID OBR66 weight
 source

Methods	method	equipment
weights	MSP-7.3.1.3	AUX120.1
potency	MSP-7.5.1.5	LC-2030
terpenes	MSP-7.5.1.7	QP2020/HS20
pesticides	MSP-7.5.1.8	LC-8060
mycotoxins	MSP-7.5.1.8	LC-8060
microbial	MSP-7.5.1.9	Hardy Diag
solvents	MSP-7.5.1.6	QP2020/HS20
metals	MSP-7.5.1.10	ICPMS2030



concentrate



Potency	%	estimated error	Terpenes	%	estimated error	%	estimated error	%	estimated error		
tetrahydrocannabinolic acid (THCa)	ND	± 0.02 %	β-myrcene	0.001%	± 0.0017%	camphene	0.002%	± 0.0017%	guaiol	0.000%	± 0.0017%
Δ ⁹ -tetrahydrocannabinol (Δ ⁹ THC)	ND	± 0.02 %	β-caryophyllene	0.001%	± 0.0017%	Δ3-carene	0.003%	± 0.0018%	β-bisabolol	0.002%	± 0.0017%
Δ ⁸ -tetrahydrocannabinol (Δ ⁸ THC)	ND	± 0.02 %	alpha-pinene	0.005%	± 0.0018%	a-terpinene	0.000%	± 0.0016%	eucalyptol	0.005%	± 0.0018%
tetrahydrocannabivarin (THCv)	ND	± 0.02 %	β-pinene	0.008%	± 0.0019%	para-cymene	0.009%	± 0.0019%			
cannabidiolic acid (CBDa)	ND	± 0.02 %	D-limonene	0.009%	± 0.0019%	g-terpinene	0.010%	± 0.0019%			
cannabidiol (CBD)	80.7%	± 0.73 %	linalool	0.008%	± 0.0019%	(-)-isopulegol	0.000%	± 0.0016%	total terpenes		0.08%
cannabidivarin (CBDv)	ND	± 0.02 %	ocimene	0.002%	± 0.0034%	geraniol	0.002%	± 0.0017%			
cannabigerolic acid (CBGa)	ND	± 0.02 %	terpinolene	0.003%	± 0.0018%	cis-nerolidol	0.000%	± 0.0016%			
cannabigerol (CBG)	4.02%	± 0.16 %	alpha-humulene	0.007%	± 0.0019%	trans-nerolidol	0.004%	± 0.0018%			
cannabinol (CBN)	ND	± 0.02 %									
cannabichromene (CBC)	ND	± 0.02 %									

Solvents	MT limit	OBR66	LOQ	Pesticides (MT)	MT limit	OBR66	LOQ	Pesticides (other)	OBR66	LOQ
propane	5,000	0 ppm	<10ppm	abamectin	2.50 ppm	0.00 ppm	<10ppb	acephate	0.00 ppm	<10ppb
butanes	5,000	0 ppm	<10ppm	acequinocyl	10.00 ppm	0.00 ppm	<10ppb	acetamiprid	0.00 ppm	<10ppb
pentanes	5,000	0 ppm	<10ppm	bifenazate	1.00 ppm	0.00 ppm	<10ppb	aldicarb	0.00 ppm	<10ppb
hexanes	290	0 ppm	<10ppm	bifenthrin	1.00 ppm	0.00 ppm	<10ppb	azoxystrobin	0.00 ppm	<10ppb
cyclohexane	3,880	0 ppm	<10ppm	chlormequat cl.	5.00 ppm	0.00 ppm	<10ppb	boscalid	0.00 ppm	<10ppb
heptanes	5,000	0 ppm	<10ppm	cyfluthrin	5.00 ppm	0.00 ppm	<80ppb	carbaryl	0.00 ppm	<10ppb
methanol	3,000	0 ppm	<10ppm	diaminozide	5.00 ppm	0.00 ppm	<10ppb	carbofuran	0.00 ppm	<10ppb
isopropanol	5,000	0 ppm	<10ppm	etoxazole	1.00 ppm	0.00 ppm	<10ppb	chloantraniliprole	0.00 ppm	<10ppb
acetone	5,000	0 ppm	<10ppm	fenoxycarb	1.00 ppm	0.00 ppm	<10ppb	chlorpyrifos	0.00 ppm	<10ppb
ethyl acetate	5,000	0 ppm	<10ppm	imazalil	1.00 ppm	0.00 ppm	<10ppb	clofentezine	0.00 ppm	<10ppb
benzene	2	0 ppm	<0.2ppm	imidacloprid	2.00 ppm	0.00 ppm	<10ppb	cypermethrin	0.00 ppm	<10ppb
toluene	890	0 ppm	<10ppm	myclobutanil	0.60 ppm	0.00 ppm	<10ppb	diazinon	0.00 ppm	<10ppb
xylene	2,170	0 ppm	<10ppm	paclobutrazol	2.00 ppm	0.00 ppm	<10ppb	dichlorvos	0.00 ppm	<10ppb
chloroform	2	0 ppm	<0.2ppm	pyrethrins	5.00 ppm	0.00 ppm	<10ppb	dimethoate	0.00 ppm	<10ppb
dichloromethane	600	0 ppm	<10ppm	spinosad	1.00 ppm	0.00 ppm	<10ppb	etofenprox	0.00 ppm	<10ppb
				spiromesifen	1.00 ppm	0.00 ppm	<10ppb	fenpyroximate	0.00 ppm	<10ppb
				spirotetramat	1.00 ppm	0.00 ppm	<10ppb	fipronil	0.00 ppm	<10ppb
				trifloxystrobin	1.00 ppm	0.00 ppm	<10ppb	flonicamid	0.00 ppm	<10ppb
								fludioxonil	0.00 ppm	<10ppb
								hexythiazox	0.00 ppm	<10ppb
								kresoxym-methyl	0.00 ppm	<10ppb
								malathion	0.00 ppm	<10ppb
								metalaxyl	0.00 ppm	<10ppb
								methiocarb	0.00 ppm	<10ppb
								methomyl	0.00 ppm	<10ppb
								oxamyl	0.00 ppm	<10ppb
								permethrins	0.00 ppm	<10ppb
								phosmet	0.00 ppm	<10ppb
								piperonyl butoxide	0.00 ppm	<10ppb
								prallethrin	0.00 ppm	<10ppb
								propiconazole	0.00 ppm	<10ppb
								pyridaben	0.00 ppm	<10ppb
								spiroxamine	0.00 ppm	<10ppb
								tebuconazole	0.00 ppm	<10ppb
								thiacloprid	0.00 ppm	<10ppb
								thiamethoxam	0.00 ppm	<10ppb

Toxic Metals	MT limit	OBR66	LOQ
arsenic	2 ppm	0.0 ppm	<10ppb
cadmium	0.8 ppm	0.0 ppm	<10ppb
lead	1.2 ppm	0.0 ppm	<10ppb
mercury	0.4 ppm	0.0 ppm	<10ppb

Microbial	MT limit	OBR66	LOQ
<i>E. coli</i>	10 CFU	0 CFU	<10 CFU/g
Salmonella sp.	10 CFU	0 CFU	<10 CFU/g
molds	10000 CFU	0 CFU	<10k CFU/g
Aflatoxin B1,B2,G1,G2	20 ppb	0 ppb	<20 ppb
Ochratoxin A	20 ppb	0 ppb	<20 ppb

Comments

• All testing was completed onsite at 6073 US93N, Olney MT •• Potency (cannabinoid concentration) is calculated from the equation: [cannabinoid] = [cannabinoid]_{HPLC} x volume_{dilution} / m_{dry}. Terpene concentration is calculated from the equation: [terpene] = (terpene mass)_{GCMS} / m_{dry}. ••• Decarboxyted cannabinoid concentration is calculated from the equation XXX_{total} = 0.877 x XXX_a + XXX •••• Standards are used to calibrate the resulting data and estimate error using a standard estimate of error method; this is combined with error from weighing and dilution using the propagation of error formula S_y² = Σ (∂f/∂i)² s_i² where i is the contributor to error. The 95% confidence range is calculated from the equation: (concentration) ± t_{CL90} X S_y. Sampling error is not

Certified by:

Kyle Larson, MSc (Biology)
 Deputy Director
 6073 US93N, Olney MT 59927
 406-881-2019 rdb@stwlabs.com

Printed 3/4/2020 1:42 PM